

### PNA- AREA A PLANT MIX

SPECIES CAN BE SUBSTITUTED WITH OTHERS ON LIST IF UNAVAILABLE

TOTAL	CATEGORY	EVEN MIX OF SPECIES
40	SPECIMEN	ACN; AEF; COV; GYD; QSH1
197	SECONDARY	AST; CAC; CLK; SAS; MOR
126	UNDERSTORY	CRA4; PRV; SAM4; HYD4
36	SCREENING	PM3; PO3; PIN3; THG3

### PNA - AREA B PLANT MIX

SPECIES CAN BE SUBSTITUTED WITH OTHERS ON LIST IF UNAVAILABLE

TOTAL	CATEGORY	EVEN MIX OF SPECIES
109	SPECIMEN	CAT; CEO1; QUM1; LIQ1; TIA1
365	SECONDARY	AEG; APA; CAC; CLK; GLT; MOR; NYS; ROB
200	UNDERSTORY	AME4; CEO4; CRA4; MAC4; SAM4; VIB4
28	SCREENING	ILX4; JIV3; PGD3; PO3; THG3

### PROTECTED NATURAL AREA PLANT LIST

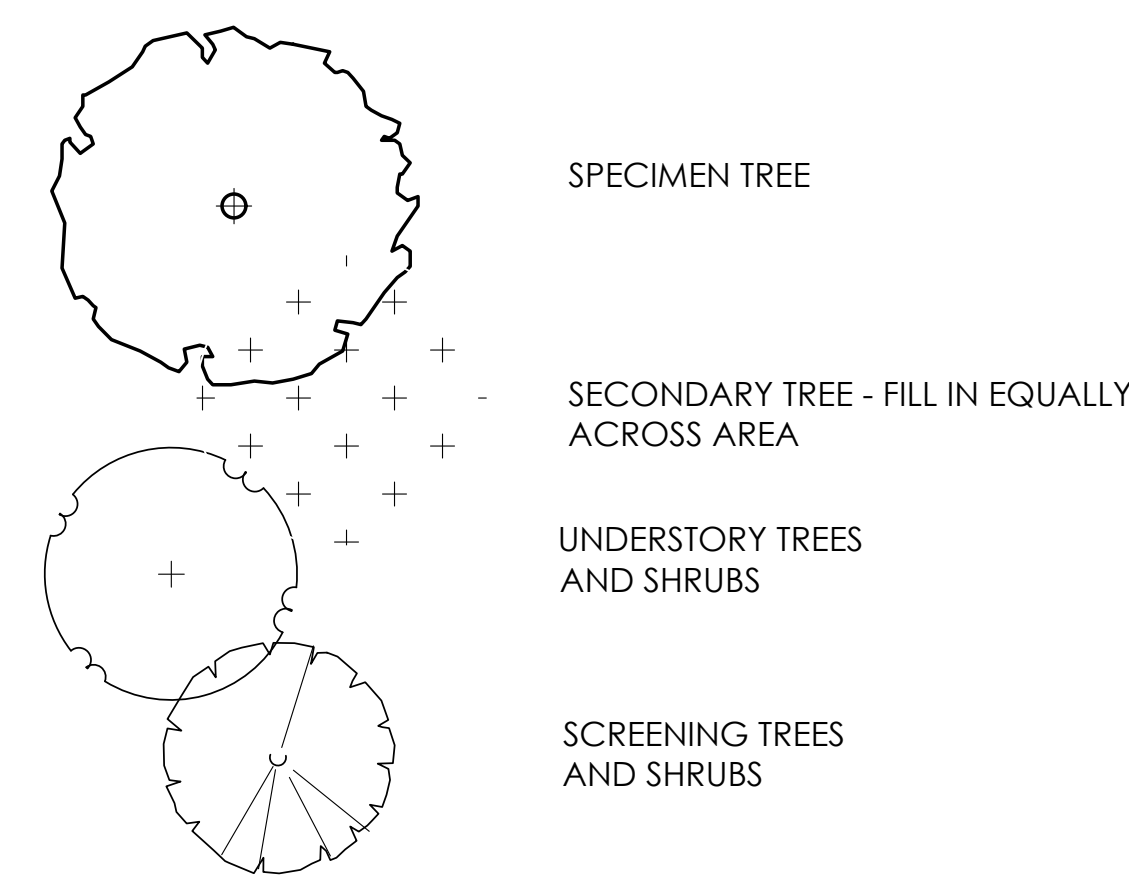
(CONTRACTOR RESPONSIBLE FOR ALL PLANTS SHOWN ON PLAN)

KEY	BOTANICAL NAME	COMMON NAME	SIZE	COND.	REMARKS
<b>DECIDUOUS TREES - SPECIMEN</b>					
ACN	ACER NIGRUM	BLACK MAPLE	1.5" CAL.	B&B	
AEF	AESCULUS FLAVA	YELLOW BUCKEYE	1.5" CAL.	B&B	
COV	CARYA OVATA	SHAGBARK HICKORY	1.5" CAL.	B&B	
CAT	CATALPA SPECIOSE	CATALPA SPECIOSE	1.5" CAL.	B&B	
CEO1	CELTIS OCCIDENTALIS	HACKBERRY	1.5" CAL.	B&B	
GYD	GYMNOCLADUS DIOICUS	KENTUCKY COFFEETREE	1.5" CAL.	B&B	
LIQ1	LIQUIDAMBAR STYRACIFLUA	SWEETGUM	1.5" CAL.	B&B	
QUM1	QUERCUS MACROCARPA	BUR OAK	1.5" CAL.	B&B	
QSH1	QUERCUS SHUMARDII	SHUMARD OAK	1.5" CAL.	B&B	
TIA1	TILIA AMERICANA 'REDMOND'	REDMOND AMERICAN LINDEN	1.5" CAL.	B&B	
<b>DECIDUOUS TREES - SECONDARY</b>					
AEG	AESCULUS GLABRA	OHIO BUCKEYE	NO CAL.	BARE ROOT	
APA	AESCULUS PAVIA	RED BUCKEYE	NO CAL.	BARE ROOT	
AST	ASMINA TRILOBA	PAWPAW	NO CAL.	BARE ROOT	
CAC	CARPINUS CAROLINIANA	AMERICAN HORNBEAM	NO CAL.	BARE ROOT	
CLK	CLADRSTIS KENTUCKEA 'LUTEA'	AMERICAN YELLOWWOOD	NO CAL.	BARE ROOT	
GLT	GLEDITSIA TRIACANTHOS VAR. INERMIS 'SKYCOLE'	SKYLINE HONEY LOCUST	NO CAL.	BARE ROOT	
MOR	MORUS RUBRA	RED MULBERRY	NO CAL.	BARE ROOT	
NYS	NYSSA SYLVATICA	BLACKGUM	NO CAL.	BARE ROOT	
ROB	ROBINIA PSEUDOACACIA 'PURPLE ROBE'	PURPLE ROBE LOCUST	NO CAL.	BARE ROOT	
SAS	SASSAFRAS ALBIDUM	SASSAFRAS	NO CAL.	BARE ROOT	
<b>EVERGREEN TREES - SCREENING</b>					
JIV3	JUNIPERUS VIRGINIANA	EASTERN REDCEDAR	3' HGT.	B&B	
PM3	PICEA MEYERI	MEYER SPRUCE	3' HGT.	B&B	
PO3	PICEA OMORIKA	SERBIAN SPRUCE	3' HGT.	B&B	
PGD3	PICEA GLAUCA 'DENSATA'	BLACK HILLS SPRUCE	3' HGT.	B&B	
PIN3	PINUS STROBUS	WHITE PINE	3' HGT.	B&B	
THG3	THUJA STANDISHII X PLICATA 'GREEN GIANT'	GREEN GIANT ARBORVITAE	3' HGT.	B&B	
<b>ORNAMENTAL TREES - UNDERSTORY</b>					
AME4	AMELANCHIER CANADENSIS 'GLENNFORM'	RAINBOW PILLAR SERVICEBERRY	4' HGT.	B&B	MULTI-STEM
CRA4	CRATAEGUS VIRIDIS 'WINTER KING'	WINTER KING HAWTHORN	4' HGT.	B&B	
MAC4	MAGNOLIA ACUMINATA	CUCUMBERTREE	4' HGT.	B&B	MULTI-STEM
PRV	PRUNUS VIRGINIANA	CHOCHECHERRY	4' HGT.	B&B	
<b>SHRUBS</b>					
CEO4	CEPHALANTHUS OCCIDENTALIS	BUTTONBUSH	4' HGT	CONT.	
HYD4	HYDRANGEA QUERCIFOLIA 'ALICE'	ALICE OAKLEAF HYDRANGEA	4' HGT	CONT.	
SAM4	SAMBUCUS CANADENSIS	AMERICAN ELDERBERRY	4' HGT	CONT.	
VIB4	VIBURNUM LANTANA 'MOHICAN'	MOHICAN VIBURNUM	4' HGT	CONT.	
ILX4	ILEX VERTICILLIATA	WINTERBERRY	4' HGT	CONT.	

1 PROTECTED NATURAL AREAS A & B  
SCALE: 1:100

### PLANT KEY TYPICALS FOR PROTECTED NATURAL AREA

SEE PLANT LIST FOR SPECIFIC PLANT SPECIES

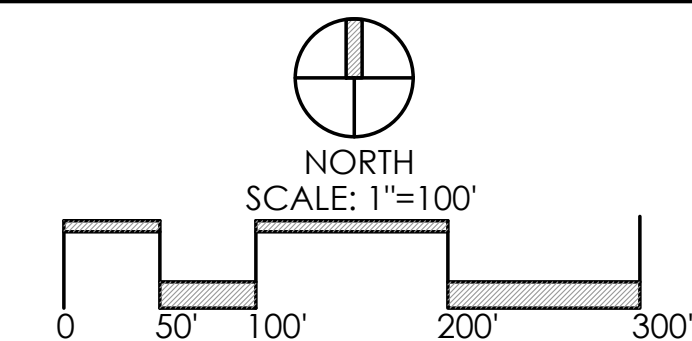


## PROTECTED NATURAL AREA LANDSCAPE PLAN - WEST

## EXHIBIT D-3

# HOLLYBROOK

PREPARED FOR KIRAN BASIREDDY  
DATE: 5.20.24



## Faris Planning & Design

LAND PLANNING LANDSCAPE ARCHITECTURE  
4876 Cemetery Road Hilliard, OH 43026  
p. (614) 487-1964 www.farisplanninganddesign.com