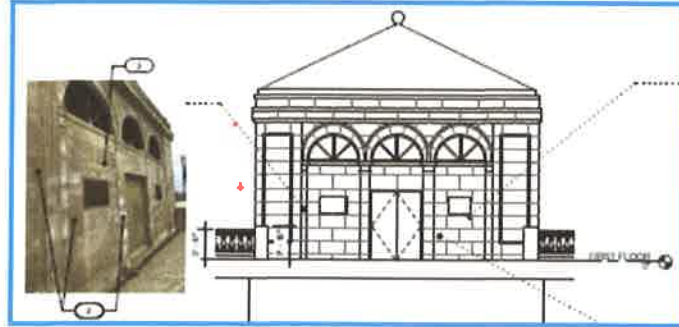
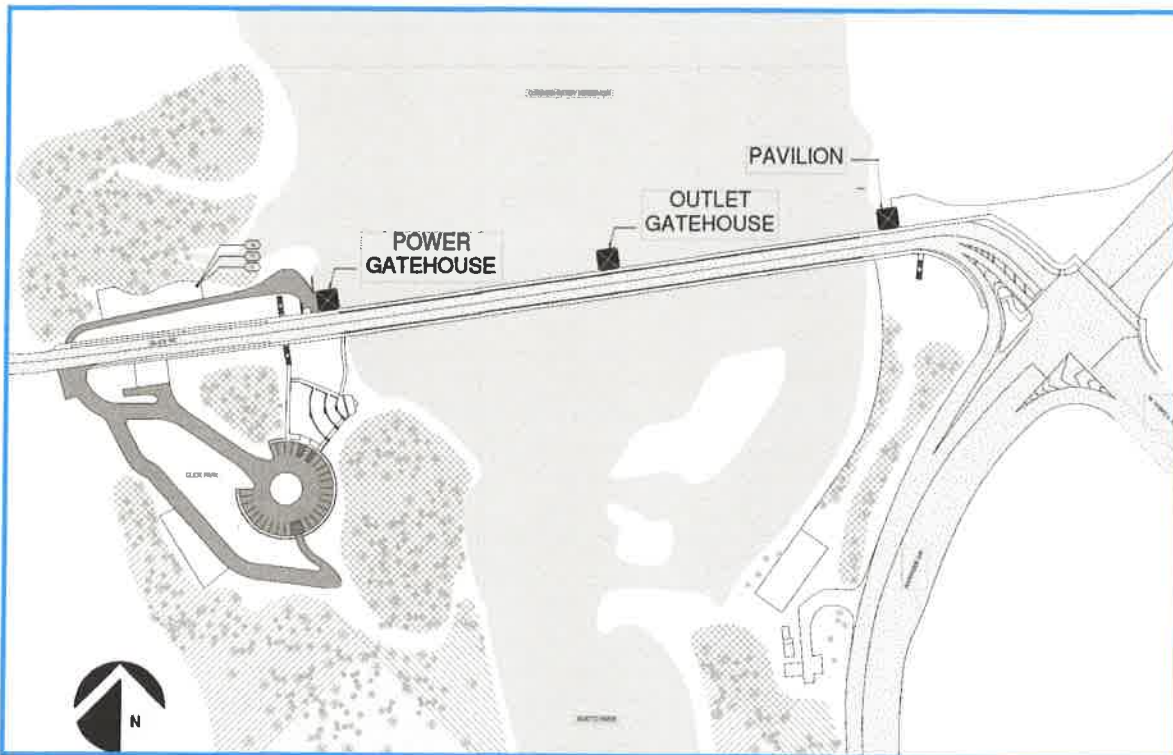


O'Shaughnessy Dam Gatehouse Miscellaneous Improvements

CIP: 690472-100000



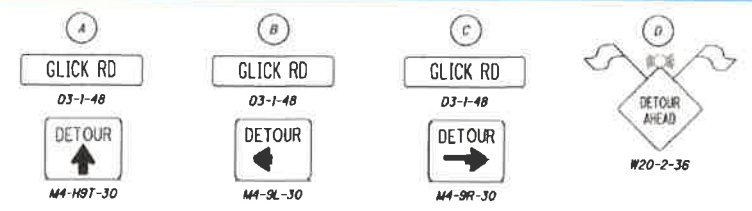
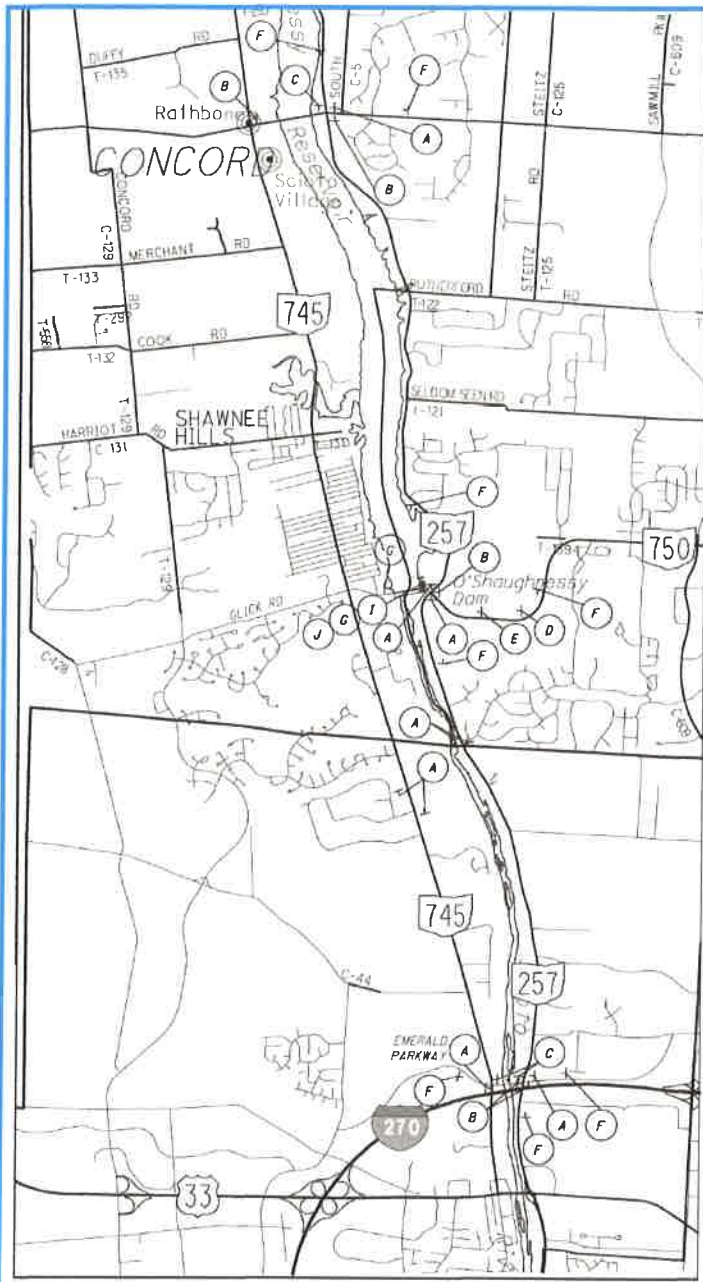
Project Overview: Project will make masonry and lighting repairs at the power gatehouse, outlet gatehouse, and pavilion and replace broken guardrail balusters along sidewalk at various points along the bridge. Construction is anticipated to start in summer 2023 and be complete by late 2023.



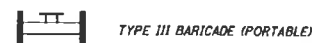
Maintenance of Traffic

- Periodic closure of the westbound lane will be required. Eastbound traffic will be maintained through the project.
- Periodic closure of the westbound lane will be limited to a 90-day period.
- When the westbound lane is closed, traffic will be detoured as shown on the attached maintenance of traffic plan.
- Lane closures will be limited to off-peak hours. Two lane, two way traffic will be maintained 6am -9am and 4pm-7pm.
- No lane closure will be permitted during holidays or other designated high traffic events (e.g., OSU game days, Memorial golf tournament, etc.)

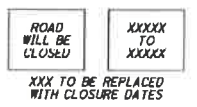
THE CITY OF
COLUMBUS
ANDREW J. GINTHER, MAYOR



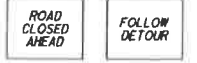
10' TYPE III BARICADE



J
PORTABLE CHANGEABLE
MESSAGE SIGNS
PER NOTE ON SHEET 2
INSTALL M DAYS PRIOR
TO CLOSURE



DURING CLOSURE DISPLAY
THE FOLLOWING:



CONSTRUCTION NOTES:
THE CONTRACTOR SHALL CLOSE ONLY THE WESTBOUND LANE OF GLICK ROAD AND INSTALL A DETOUR AS SHOWN FOR A PERIOD OF 90 DAYS. THE EASTBOUND TRAFFIC CAN BE SHIFTED, IF NECESSARY, WHEN CONSTRUCTION ACTIVITIES DO NOT REQUIRE A LANE CLOSURE. THE CONTRACTOR SHALL REMOVE OR COVER ALL DETOUR SIGNS AND REMOVE ALL BARRICADES. WHEN A DETOUR IS NOT IN PLACE THE CONTRACTOR SHALL MAINTAIN TWO-WAY TWO-LANE ON GLICK ROAD DURING NON-WORKING HOURS OF 6AM - 9AM AND 4PM - 7PM.